



Hall End Road | Great Barr, Birmingham | B42 2BF

OIRO £300,000



Summary

Gent Properties are delighted to bring to market this impeccably decorated end-terraced family home located in the quiet cul-de-sac of Hall End Road, Great Barr, Birmingham.

Located on a new build estate with excellent links to the M6 and A34, the property is also within distance of great schools (Priestly Smith rated Outstanding, Barr View Primary rated Good) and amenities.

This large 3 bedroom, 3 bathroom home was built to an exceptional standard in 2019 by Taylor Wimpey so continues to benefit from NHBC protection. The current owners brought the property from new, upgrading the kitchen to include built-in appliances. It has been decorated beautifully inside and out and would make the perfect family home ready to move in to without any work or modernisation being required. The owners have installed a media wall as a fantastic addition to the lounge and recently landscaped garden.

Entering the property you step into a spacious hall from which access to the lounge and stairs to the first floor can be found. Travelling through the lounge and into the kitchen/diner, the downstairs toilet can be found to the right and a separate large utility can be found to the left. Access to the landscaped private garden can be gained via the kitchen/diner or the side gate. The property benefits from two parking spaces situated directly in front of the property.

Up to the first floor, the property boasts three spacious bedrooms with an ensuite with shower to the master bedroom. The owners currently use the sizeable third bedroom as a dressing room. The family bathroom has a shower over the bath.

Viewing is a must to fully appreciate this beautiful property.

Key Features

Three Spacious Bedrooms

Three Bathrooms

Landscaped Garden

Beautifully Decorated

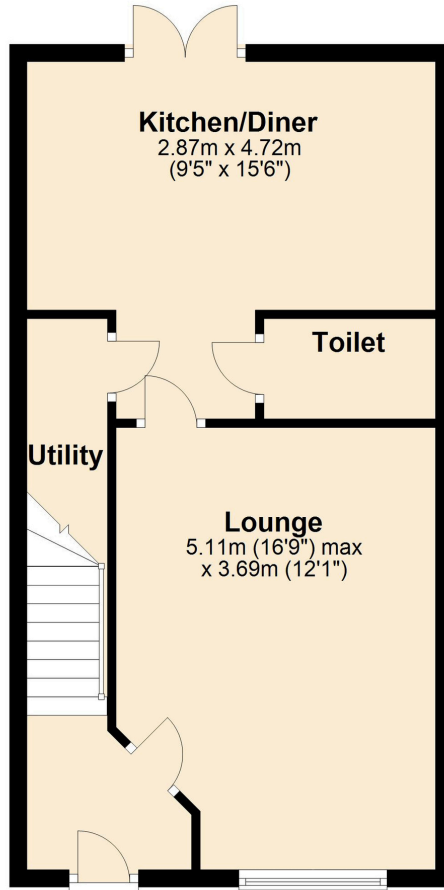
NHBC Protected





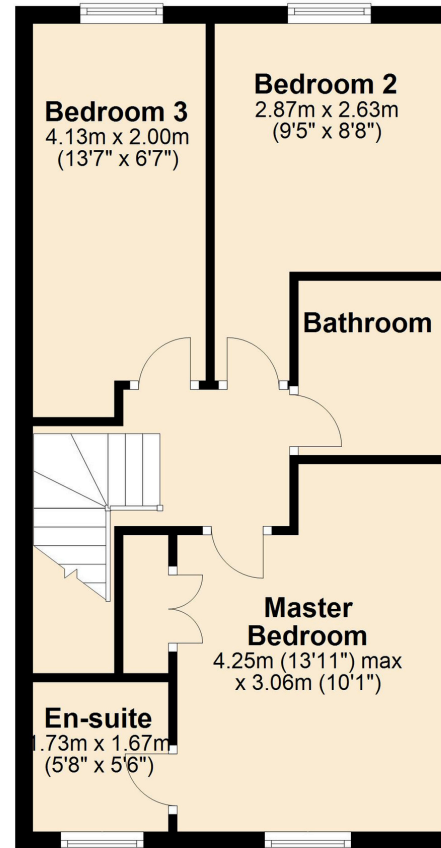
Ground Floor

Approx. 36.3 sq. metres (390.5 sq. feet)



First Floor

Approx. 44.3 sq. metres (477.3 sq. feet)



Total area: approx. 80.6 sq. metres (867.9 sq. feet)

Gent Properties endeavour to maintain accurate depictions of properties in Virtual Tours, Floor Plans and descriptions. However, these are intended only as a guide and purchasers must satisfy themselves by personal inspection.

21 New Hall Road, Birmingham,
B42 2BF

Energy rating
B

Valid until 01.05.2029

